

TECNA's latest 3664P 14000Amp Automatic Spot Welder from Italy, with "SMART PLUS" technology is a revolution in automotive spot welding equipment. It has sophisticated and upgradable software that is designed to take the guess work out of entering parameters such as metal type, number of panels and panel thickness to perform the correct spot welds. At the push of a button, the machine automatically detects and measures the metal panels and applies the exact amount of welding current, welding time and clamping force to consistently produce factory quality spot welds on steel, HSS, UHSS and Boron without any operator input!

Ease Of Use

Factory Quality Welds in 4 easy steps:

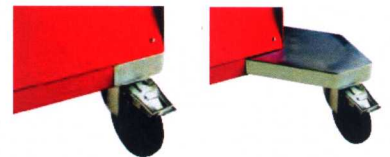


- Step 1. Log on by user name.
- Step 2. Select Arm and tips.
- Step 3. Calibrate.
- Step 4. Select "Smart Plus" and weld in Automatic Mode. "Smart Plus" screen shows all parameters and weld results.

Water cooling system to optimize productivity and increase duty cycle. Welding transformer, arms and electrodes are water-cooled.



The cart is ergonomic, compact and stable with front swivel/extendable and lockable casters.



Welding Controller

New touch screen welding control unit with intuitive graphic diagrams, allowing a very simple use of the machine by the user. It is possible to choose between different operation modes: the automatic **Smart Plus** mode recognizes the thickness and type of material thus automatically determining the **best values for current and force**. The **Expert** mode allows a personal setting of all the desired welding parameters. A **USB interface** is available to easily export all data relevant to the performed welded spots for printing purposes. The same USB interface is used to update those welding parameters needed for new materials, parameters constantly developed by **TECNA** in **cooperation with the main car manufacturers**.

SMART PLUS:



FULL MODE:



MANAGEMENT OF PROGRAMS MODE:



SPOTS ARCHIVE

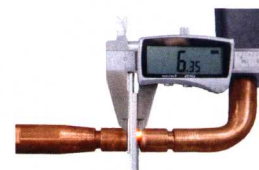


OPERATORS MANAGEMENT:

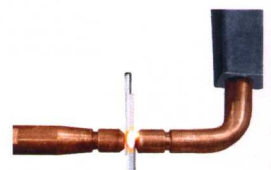


Automatic welding

At the press of a button on **SMART PLUS** mode, the machine automatically measures and determines the type, layers and thickness of steel and sets the parameters. The weld and weld settings are monitored and adjusted 2000 times per second, producing a factory quality spot weld.



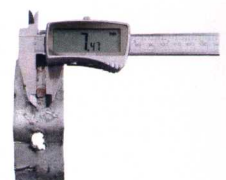
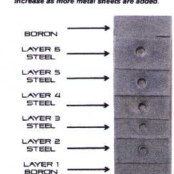
SMART PLUS mode demonstrates the automatic adjustment of the weld at various sheet layers and steel type.



The pull test achieved a large nugget size of 7.47mm diameter on two pieces of 2mm thick HSS test samples.

Results produced from spot welding five sheets of 1mm mild steel to 6mm Boron steel using "Smart Plus" mode.

Welding current and nugget size automatically increase as more metal sheets are added.



The Smart Gun

The 'Smart Gun' is equipped with its own integrated water cooled 14000amp transformer that allows high power to be applied without the need of large and heavy cables. In fact, the **Smart Gun** cable is long, thin and lightweight and does not emit any electromagnetic field. Another great advantage with this system is that the machine uses up to 60% less energy to deliver the same amount of welding current, which is a real benefit to workshops that have limited power available.



The TECNA USB Port allows the operator to download all user names, weld parameters, weld quality confirmation and job identification stored in the machine for up to two years. Reports can then be downloaded to USB stick at any time and allocated by user name, job code or date for report printouts from your computer. More importantly it allows software upgrades to cater for the ever changing requirements of future car body metals.



Opening and changing the arms is fast and simple thanks to its unique quick release pivot and lock system, which not only provides clearance around obstacles, but also allows a wide opening area between electrodes for easy access to difficult areas.



With the aid of the **Smart Gun's** weight balancer combined with the near 360degree rotating head, lifting and positioning the gun is effortless. The two stage 'Clamp only then Weld' trigger action is designed to put you in control of weld activation. Warnings can also be reset at the flick of the gun trigger as well as the touchscreen.

Equipement

Item		36EZ	
Mains voltage/frequency *		220V 50/60 Hz	
Phases nr.		3	
Guns		STANDARD	OPTIONAL
Item		8679TS	8679TS7
Max. electrode force	daN	450	700

Welding c-arms



TECNA's C- type welding arms are fully insulated and water cooled to the welding electrode and tips from an intercooled, closed loop water cooling system. Easier handling on the larger arms is achieved by attaching support handles at various points on either side. The 85mm c-arm comes standard with the welder. The wheel arch, 205mm, 355mm, 505mm, and 635mm arms are optional.



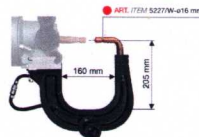
WHEEL ARCH ARM

#8689



85mm STANDARD C-ARM

#8685/W/S



#8684/W/S Arm 205mm



355mm MEDIUM C-ARM

#8686/W/S



505/635mm LARGE C-ARM

#8688/W/S #8687/W/S

Arm packs

#8680/PACK01 FOR GUN 8679TS



#8680/7/PACK01 FOR GUN 8679TS7



#8680/PACK02 FOR GUN 8679TS



#8680/7/PACK02 FOR GUN 8679TS7



ARSLAN AUTOMOTIVE DISTRIBUTION CENTER

21 Lawrence Paquette Dr., Champlain, NY 12919, 1-800-465-8575

ARSLANAUTO.COM